



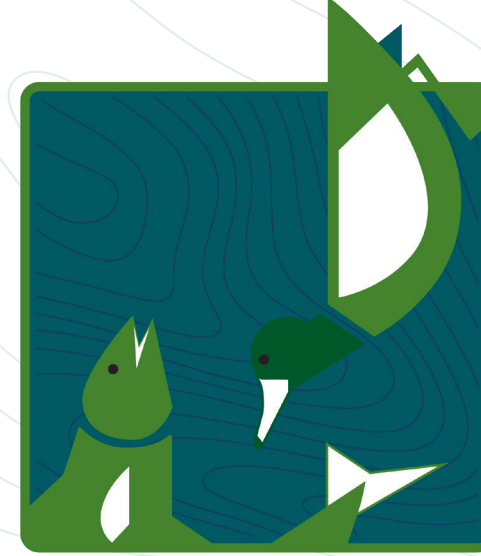
Project Partners & Goals

- Port:** Reduce flood risk to industrial park. Reduce O&M costs. Promote a local trail network.
- USFWS:** Improve ecological function. Eliminate need for dredging. Maintain/improve recreation opportunities.
- BPA:** Generate mitigation credits for the FCRPS BiOp.
- WSDOT:** Reduce flood risk to SR 14.
- City:** Reduce flood risk to wastewater treatment plant and City residents. Promote tourism, including a local trail network.
- Gorge Refuge Stewards:** Community involvement, public education and habitat restoration.
- Private landowners:** Reduce flood risk.

Steigerwald Lake National Wildlife Refuge—Existing Conditions



This photo is looking east. In the forefront is the Port of Camas-Washougal's Industrial Park and the City of Washougal's wastewater treatment plant. In the back is the Refuge and the Columbia River.



Steigerwald Reconnection PROJECT Clark County, Washington

The Steigerwald Reconnection Project is a collaborative project to reconfigure the existing Columbia River levee system to reduce flood risk, reconnect 965 acres of Columbia River floodplain, and increase recreation opportunities at Steigerwald Lake National Wildlife Refuge.

Two River Systems, Two Problems

- Flooding:** The existing levee system blocks Gibbons Creek from naturally draining into the Columbia River and as a result, it often floods public and private property and infrastructure.
- Fish Access:** The existing levee obstructs fish access to over 1,000 acres of important floodplain habitat.



The Solution: Project Details

- 160 acres of land acquired by Friends of Columbia Gorge Land Trust and transfer to USFWS.
- Construct two setback levees to improve flood protection for the Port's Industrial Park, the City of Washougal's wastewater facility, private residences, and a working ranch.
- Raise State Route 14 to the Columbia River's 500-year flood elevation.
- Build a new, larger parking lot at the Refuge and add one mile to the existing trail system.
- Remove Gibbons Creek's failing water diversion infrastructure.
- Remove 2.2 miles of the existing man-made levee to reconnect 965 acres of floodplain and two miles of salmon and lamprey habitat.
- Engage 2,000 volunteers and students in riparian plantings.



Project Cost

Multiple partners make the project a success. Construction costs stay in the local economy.

- Project will add **\$67.4 million** to the local economy.
- Creates **503 local family wage jobs**.
- Project contractors are **Rotschy, Inc.** of Vancouver and **LKE Corporation** of Washougal.



The Steigerwald Reconnection Project: Many Partners, Many Benefits, Real Results for Oregon and Washington

Project Benefits

Habitat

- Restore 965 acres of historic Columbia River floodplain habitat and year-round access for salmon and lamprey to the floodplain and the entire Gibbons Creek watershed.
- Complete the largest habitat restoration project in the Columbia River estuary.

Flood Control

- Reduce flood risk to State Route 14 and residences, some of which flooded in 1996.
- Remove approximately 125 acres of Port and City infrastructure from the FEMA flood zone, including a wastewater treatment plant that services 15,000 residents.
- Reduce Port pumping and maintenance costs (up to \$60,000 annually in electric costs alone).
- Eliminate the failing diversion structure and elevated canal, saving USFWS \$4 million to replace.
- Maintain flood protection seven feet above the Columbia River's 500-year flood elevation.

Recreation & Kids Education

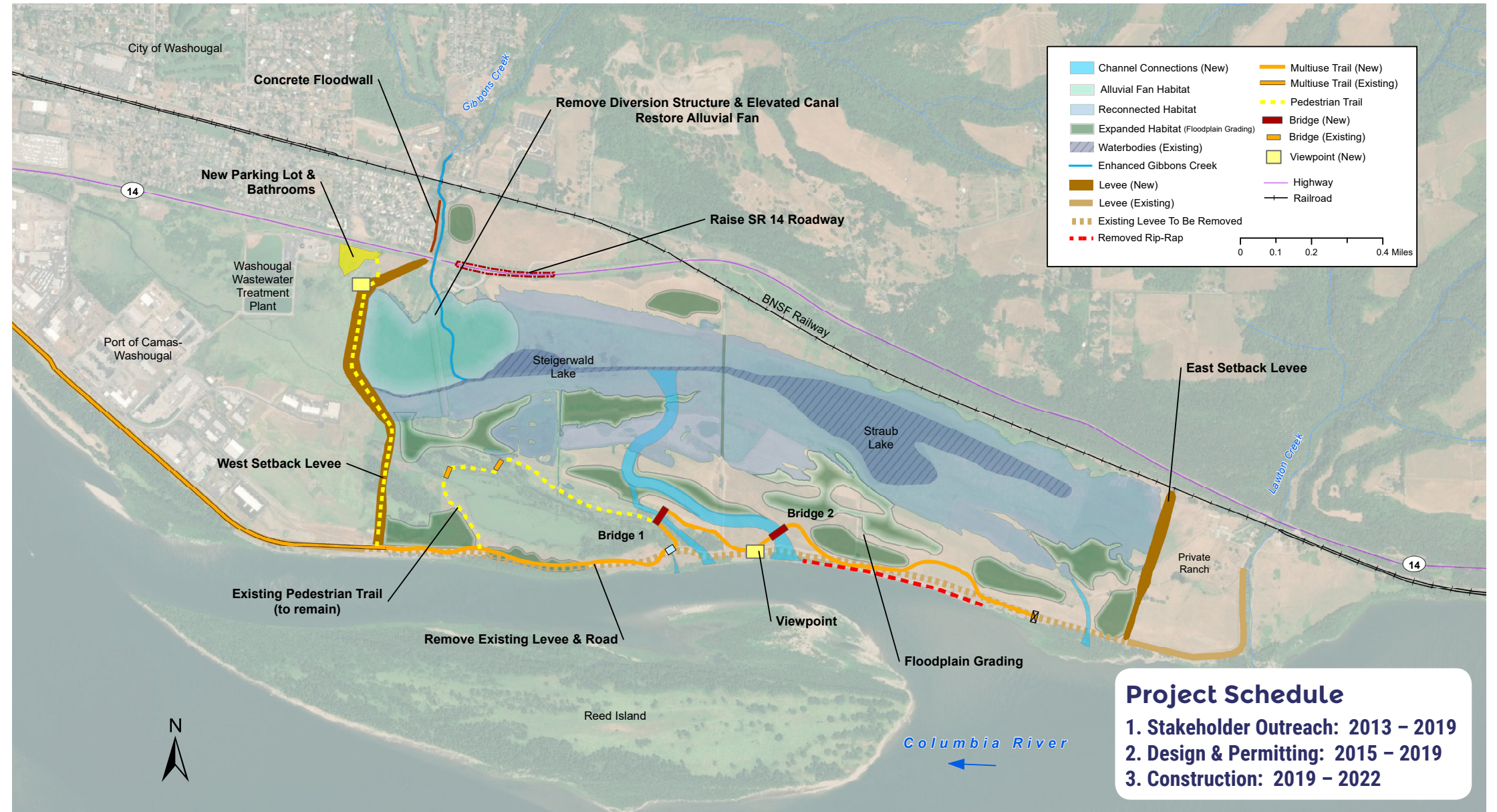
- Increase tourism and hiking opportunities. The Refuge averages 90,000 visitors annually.
- Increase public and student activity at the Refuge. Throughout this project, we will take 2,000 local school students to the Refuge and host 16 community volunteer plantings.

Future Industrial Development

- Facilitate a USFWS and Port land exchange that improves habitat connectivity in the Refuge and development potential in the Port's Industrial Park.

Economic Impact

- With the economic multiplier, add \$67.4 million to the local economy.
- Create 503 local family wage jobs, with an average annual wage of \$57,000.
- Increase tourism and recreation that will benefit local restaurants, shops, and other local businesses.



The U.S. Fish and Wildlife Service owns Steigerwald Lake National Wildlife Refuge and has invested significant public dollars to improve habitat, create public access, and align their work with other federal and local partners to gain habitat for threatened and endangered species. The Port of Camas-Washougal owns and maintains the levee system.

